

classic cube

DESKS



Model Number
CUD6030FFB-PV

Dimensions
60Wx30Dx29H

Finishes
available in all 43 standard
Invincible colors, smooth
and textured finishes, no
upcharges

Sizes

WxD double ped desks
45x30 CUD4530FBF-PV
48x30 CUD4830FBF-PV
60x30 CUD6030FBF-PV
66x30 CUD6630FBF-PV
72x30 CUD7230FBF-PV

WxD single ped desks
45x30 CUD4530FBP-PV
48x30 CUD4830FBP-PV
60x30 CUD6030FBP-PV
66x30 CUD6630FBP-PV
72x30 CUD7230FBP-PV

↑ back panel selection
↑ left side selection
↑ right side selection

back panel selection options

F = full back panel
H = 3/4 back panel
X = open back panel
N = no back panel

left or right side selection options

P = panel leg end
S = square leg
F = file/file pedestal
B = box/box/file pedestal
A = box/box/box/box pedestal

refer to price guide for complete
list of available desks, credenzas,
risers, returns, and bridges

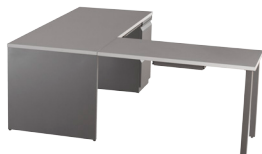
Styles



CUD6030FBF-PV
full pull standard



CUC6024FBF-PV-PW
credenza exhibiting laminate fronts
& waterfall pulls



CUD7230XPB-PV & CULR4224NS-PV
features panel end leg, single ped,
and return with square legs

Features



1-1/4" laminate top,
M3 commercial grade
wood core
(45#-48# density)



Desk [CUD7230FPP-PV]
Return [CURR4822FP-PV]
Pedestal [UTM2250BF-LK]
Pedestal w/cushion [UTMC2250BF-LK]
Riser [RDBR72LK]

center drawers may be
ordered separately

pullout shelf option
available
use suffix -PS



CUD4824NSB-PV
Full size peds for
maximum storage



full depth box and file drawers
28" deep
[deepest in the industry]
20 gauge 1-piece jacket
18 gauge bottom and uprights &
welding of uprights to create rigid
box structure
heavy forming of drawer sides
adds to strength and durability



invincible
building forever furniture

(V) 877 682 4601
(F) 920 683 2970
sales@invinciblefurniture.com

842 South 26th Street PO Box 1117
Manitowoc, Wisconsin 54221-1117
invinciblefurniture.com

classic cube

DESKS

FEATURES/OPTIONS

- All Cube product ships fully assembled.
- May be ordered as a single desk or as a complete “L” or “U” unit with options including bridges and credenzas (and Vista shelves and hutches).
- Back panels available in Full height, 3/4 height and Open Access (X Back).
- All pedestals are full pedestals.
- Seamed flush modesty panel.
- End panel and legs have non-corrosive adjustable floor glides.
- Optional non-locking center drawer operates on ball bearing suspensions.
- Box/File pedestal units contain their own lock. All pedestals letter width.
- Box drawers contain one adjustable steel divider. Additional dividers available.
- File drawers feature high sides for hanging folders.
- File drawer bottoms are equipped to accept optional compressor with quick release lever.
- Worksurfaces feature 1-1/4” thick HPL high density wood core with PVC edge banding. Grommets included on desks; no grommets on returns, bridges or credenzas.
- Vista hutches and shelves may be used in conjunction with Cube product.
- Available in all 42 standard paint colors and any WilsonArt laminate!

DIMENSIONS

- All desks 29” high.
- Double Pedestal desks available in 72”, 66” and 60” widths.
- Single Pedestal Desks available in 72”, 66”, 60”, 48” and 45” widths.
- Returns with pedestals available in 45”Wx22-1/2”D x29”H and 48”Wx24”Dx29”H.
- Returns without pedestals available in 45”Wx22-1/2”Dx29”H and 48”Wx24”Dx29”H.
- Classic Cube Double Pedestal Credenzas available in 72”, 66” and 60” widths (all 24” depths).
- Classic Cube Single Pedestal Credenzas available in 72”, 66” and 60” widths (all 24” depths).
- Classic Cube Bridges available in 36”, 42” and 48” widths and 22-1/2” and 24” depths.