

tria spec

DESKS



Model Number

TRIDDM6024SPATU-PV

Dimensions

60Wx24Dx29H

Finishes

available in all standard Invincible colors, smooth and textured finishes, no upcharges

Illustration

shown with optional short perforated angled modesty back panel

shown with the invincible ironworks leg

also available with fundamentals and freedom leg styles

Sizes

TRIDDM6024SPATU-PV

TR = tria spec
ID = ironworks desk
D = Dtop
M = mobile
6024 = 60Wx24D
S = S back panel (8")
P = perforated back panel
A = angled back panel
T = freedom Tleg
U = pencil drw box file ped
-PV = pvc edge

configure to suit your taste...

- *with or without back panel
- *back panel straight
- *back panel perforated
- *back panel angled
- *back panel perforated and angled
- *with ironworks leg
- *with freedom leg
- *with fundamentals leg

see Pricer for full item part listing

Features



perforated modesty back panel (no angle)



indestructible leg and foot for a lifetime of use

freedom

another stylish yet rugged leg

fundamentals



sleek new design for the modern classroom

available in 48, 54 and 60 wide 24 and 30 deep



Unique pedestal design includes a PENCIL drawer, box drawer, and file drawer.



fully exposed 3" casters allows easy access to caster locks

24D provide smaller footprint for ease of mobility

30D yields additional storage capacity



one-piece multi-formed 22ga cold rolled steel pedestal body 18ga bottom welded to the jacket

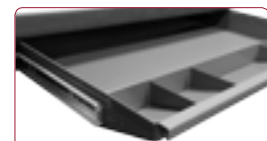
four multi-formed 18ga uprights welded to jacket and bottom stiffener

full progressive ball bearing race suspensions

lock bar is 18ga steel 2pc multi-formed & welded

drawers 22ga multi-formed bodies

22 ga drawer fronts



optional center drawer



invincible
building forever furniture

(V) 877 682 4601
(F) 920 683 2970
sales@invinciblefurniture.com

842 South 26th Street PO Box 1117
Manitowoc, Wisconsin 54221-1117
invinciblefurniture.com