

# es freedom

## DESKS



### Model Number

ESFDDM6024SPTB-TE

### Dimensions

60Wx24Dx29H

### Finishes

available in all 43 standard Invincible colors, smooth and textured finishes, no upcharges

### Sizes

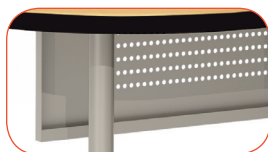
#### ESFDDM6024SPTB-TE

ES = es series  
FD = freedom desk  
D = Dtop  
M = mobile  
6024 = 60Wx24D  
S = S back panel (8")  
P = perforated back panel  
T = freedom Tleg  
B = box box file ped  
-TE = t-mold edge

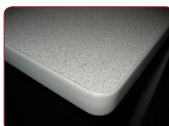
#### ESFDDM6030SPATB-TE

ES = es series  
FD = freedom desk  
D = Dtop  
M = mobile  
6030 = 60Wx30D  
S = S back panel (8")  
P = perforated back panel  
A = angled back panel (not shown)  
T = freedom Tleg  
B = box box file ped  
-TE = t-mold edge

### Features



perforated modesty panel optional



t-mold edge top for rounded softer corners



indestructible freedom leg and foot for a lifetime of use

### sleek new design for the modern classroom

available in 48, 54 and 60 wide 24 and 30 deep



1-1/4" laminate top M3 commercial grade wood core (45#-48# density)



24D provide smaller footprint for ease of mobility  
30D yields additional storage capacity



one-piece multi-formed 22ga cold rolled steel pedestal body  
18ga bottom welded to the jacket

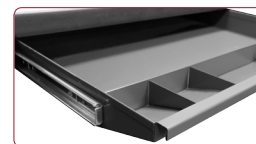
four multi-formed 18ga uprights welded to jacket and bottom stiffener

full progressive ball bearing race suspensions

lock bar is 18ga steel 2pc multi-formed & welded

drawers 22ga multi-formed bodies

22 ga drawer fronts



optional center drawer



**invincible**  
building forever furniture

(V) 877 682 4601  
(F) 920 683 2970  
sales@invinciblefurniture.com

842 South 26th Street PO Box 1117  
Manitowoc, Wisconsin 54221-1117  
invinciblefurniture.com