

building
forever
furniture

fabric card



invincible™



NITRO 2317
042 Cream Soda



TIMBERLINE 3903
053 Sunspot



LIDO 2858
010 Hermosa



COASTLINE 3495
030 Sunset



NITRO 2317
030 Lemon Lime



SPINEL 3582
113 Amber



FR701@ 2100
758 Desert Sand



ANCHORAGE 2335
2035 Angora



FR701@ 2100
748 Bone



ANCHORAGE 2335
2047 Eucalyptus



FR701@ 2100
755 Leaf



TEMPEST 2120
041 Gold Rush



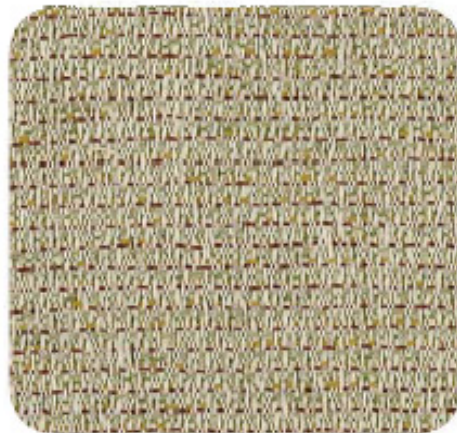
DRIFT 2539
020 Alabaster



AUSTER 2537
021 Sprout



STREETWISE 2721
1882 Doughnut Shop



SPINEL 3582
013 Patina



DRIFT 2539
030 Sprout



SPINEL 3582
011 Opal



TIMBERLINE 3903
030 Woodberry



STREETWISE 2721
1894 News Stand



AUSTER 2537
030 Pebble



TEMPEST 2120
031 Frost



DRIFT 2539
011 Dusty Miller



ANCHORAGE 2335
2083 Coffee Bean



FR7018 2100
298 Medium Grey



ANCHORAGE 2335
2027 Wolf



FR7018 2100
468 Eucalyptus



ANCHORAGE 2335
2017 Slate



LIDO 2858
031 Smith Point



NITRO 2317
020 Spritzer



COASTLINE 3495
091 Dove



STREETWISE 2721
1893 Pigeon



TIMBERLINE 3903
060 Poplar



TEMPEST 2120
021 Undercurrent

SPECIFICATIONS

Pattern	Grade	Content	Weight	Width	Flammability
ANCHORAGE Style 2335	1	35% Post-Consumer Recycled Polyester 65% Pre-Consumer Recycled Polyester	15.0 ± 1.0 Oz/Lin Yd	66"	ASTM E-84, Class 1 or A
AUSTER Style 2537	2	29% Post-Consumer Recycled Polyester 71% Pre-Consumer Recycled Polyester	11.4 ± 1.0 Oz/Lin Yd	66"	ASTM E-84, Class 1 or A
COASTLINE Style 3495	1	34% Post-Consumer Recycled Polyester 66% Pre-Consumer Recycled Polyester	12.2 ± 1.0 Oz/Lin Yd	66"	ASTM E-84, Class 1 or A
DRIFT Style 2539	2	51% Post-Consumer Recycled Polyester 49% Pre-Consumer Recycled Polyester	12.0 ± 1.0 Oz/Lin Yd	66"	ASTM E-84, Class 1 or A
FR701® Style 2100	1	100% Post-Consumer Recycled Polyester	16.0 ± 0.5 Oz/Lin Yd	66"	ASTM E-84, Class 1 or A
LIDO Style 2858	1	48% Post-Consumer Recycled Polyester 52% Pre-Consumer Recycled Polyester	11.5 ± 1.0 Oz/Lin Yd	66"	ASTM E-84, Class 1 or A
NITRO Style 2317	2	100% Post-Consumer Recycled Polyester	12.3 ± 1.0 Oz/Lin Yd	66"	ASTM E-84, Class 1 or A
SPINEL Style 3582	1	32% Post-Consumer Recycled Polyester 68% Pre-Consumer Recycled Polyester	11.8 ± 1.0 Oz/Lin Yd	66"	ASTM E-84, Class 1 or A
STREETWISE Style 2721	1	22% Post-Consumer Recycled Polyester 78% Pre-Consumer Recycled Polyester	13.0 ± 1.0 Oz/Lin Yd	66"	ASTM E-84, Class 1 or A
TEMPEST Style 2120	2	27% Post-Consumer Recycled Polyester 73% Pre-Consumer Recycled Polyester	11.3 ± 1.0 Oz/Lin Yd	66"	ASTM E-84, Class 1 or A
TIMBERLINE Style 3903	2	53% Post-Consumer Recycled Polyester 47% Pre-Consumer Recycled Polyester	16.8 ± 1.0 Oz/Lin Yd	66"	ASTM E-84, Class 1 or A

COLORS MAY VARY SLIGHTLY BETWEEN DYE LOTS. THESE FABRICS ARE DIRECTIONAL. NOTE SUBTLE PATTERN IN APPLICATION TO PANELS.

APPLICATION TESTING OF THESE PRODUCTS IS RECOMMENDED.



TERRATEX® IS A REGISTERED TRADEMARK OF TRUE TEXTILES, INC. AND DESIGNATES FABRICS THAT ARE MADE FROM 100% RECYCLED OR COMPOSTABLE MATERIAL USING INCREASINGLY SUSTAINABLE MANUFACTURING PRACTICES TO PRODUCE A HIGH QUALITY PRODUCT THAT IS RECYCLABLE AT THE END OF ITS USEFUL LIFE.



CO₂ EMISSIONS FROM 100% OF THE ELECTRICITY USED BY THE MANUFACTURER TO PRODUCE THIS PRODUCT HAVE BEEN MEASURED AND OFFSET IN ACCORDANCE WITH THE CARBONNEUTRAL PROTOCOL.

CarbonNeutral.com



THESE FABRICS ARE INCLUDED IN THE UNDERWRITERS LABORATORY PANEL FABRIC RECOGNITION PROGRAM. ADDITIONAL TESTING OF THESE U.L. RECOGNIZED COMPONENT FABRICS IS NOT REQUIRED ON APPROVED PANELS FROM PARTICIPATING MANUFACTURERS.



invincible™

872 South 26th Street
PO Box 1117
Manitowoc, WI 54221-1117

(V) 877 682 4601
(F) 920 683 2970

www.InvincibleFurniture.com
Sales@InvincibleFurniture.com