

educator

DESKS



Model Number Podium
TCPMSBF-PVA

Dimensions Podium
16-3/4Wx24Dx41-3/4

Model Number Side Table
ITDM5424SPTT-PV

Dimensions Side Table
54Wx24Dx29H

Finishes
available in dozens of standard Invincible colors, smooth and textured finishes, no upcharges

- may be purchased together or separately
- side table illustrated with two legs - may specify one leg
- easily attaches & detaches, utilizing quick release bracket, part #TCP-TBLBKT-KIT

Ironworks Side Tables

WxD	side table - Dtop
42x24	ITDM4224NTT-PV
48x24	ITDM4824NTT-PV
54x24	ITDM5424NTT-PV
42x24	ITDM4224STT-PV
48x24	ITDM4824STT-PV
54x24	ITDM5424STT-PV
42x24	ITDM4224SPTT-PV
48x24	ITDM4824SPTT-PV
54x24	ITDM5424SPTT-PV
42x24	ITDM4224STPAT-PV
48x24	ITDM4824SPATT-PV
54x24	ITDM5424SPATT-PV

WxD	side table - PVC Top
42x24	ITM4224NTT-PV
48x24	ITM4824NTT-PV
54x24	ITM5424NTT-PV
42x24	ITM4224STT-PV
48x24	ITM4824STT-PV
54x24	ITM5424STT-PV
42x24	ITM4224SPTT-PV
48x24	ITM4824SPTT-PV
54x24	ITM5424SPTT-PV
42x24	ITM4224STPAT-PV
48x24	ITM4824SPATT-PV
54x24	ITM5424SPATT-PV

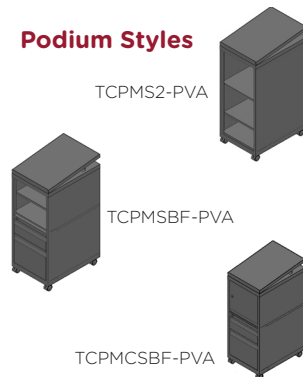
*see backside for PN details

Table Leg Options



Alter prefix to specify desired leg

Podium Styles



counterweights standard for stability

Features

edge treatments



PVC 3mm standard



T-mold optional



Bracket, item part # TCP-TBLBKT-KIT, mounts podium & table together

1-1/4" laminate top M3 commercial grade wood core (45#-48# density)



may mount side table to left or right side

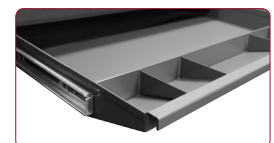


full progressive ball bearing race suspensions

lock bar is 18ga steel drawers 22ga multi-formed bodies 22 ga drawer fronts



adjustable height lectern



optional center drawer

educator

ITEM PART NUMBER DETAIL

ITM5424SPATT-PV

IT = Ironworks Table
M = Mobile
5424 = 54Wx24D
S = Short Modesty Back Panel
P = Perforated Modesty Back Panel
A = Angled Modesty Back Panel
TT = Two (2) T legs
-PV = Rectangular PVC Top

ITDM5424SPANT-PV

IT = Ironworks Table
D = Dtop
M = Mobile
5424 = 54Wx24D
S = Short Modesty Back Panel
P = Perforated Modesty Back Panel
A = Angled Modesty Back Panel
NT = No Leg Left, T leg Right, Dtop Right
-PV = t-mold edge

ITDM5424SPATN-PV

IT = Ironworks Table
D = Dtop
M = Mobile
5424 = 54Wx24D
S = Short Modesty Back Panel
P = Perforated Modesty Back Panel
A = Angled Modesty Back Panel
TN = T leg Left, Dtop Left, No Leg Right
-PV = t-mold edge

FT5424SPATT-PV

IT = Freedom Table
M = Mobile
5424 = 54Wx24D
S = Short Modesty Back Panel
P = Perforated Modesty Back Panel
A = Angled Modesty Back Panel
TT = Two (2) T legs
-PV = Rectangular PVC Top

FTDM5424SPANT-PV

IT = Freedom Table
D = Dtop
M = Mobile
5424 = 54Wx24D
S = Short Modesty Back Panel
P = Perforated Modesty Back Panel
A = Angled Modesty Back Panel
NT = No Leg Left, T leg Right, Dtop Right
-PV = t-mold edge

FTDM5424SPATN-PV

IT = Freedom Table
D = Dtop
M = Mobile
5424 = 54Wx24D
S = Short Modesty Back Panel
P = Perforated Modesty Back Panel
A = Angled Modesty Back Panel
TN = T leg Left, Dtop Left, No Leg Right
-PV = t-mold edge

FUTM5424JATT-PV

FUT = Fundamentals Table
M = Mobile
5424 = 54Wx24D
J = 15" Modesty Back Panel
A = Angled Modesty Back Panel
TT = Two (2) T legs
-PV = Rectangular PVC Top

FUTM5424JPATT-PV

FUT = Fundamentals Table
M = Mobile
5424 = 54Wx24D
J = 15" Modesty Back Panel
P = Perforated Modesty Back Panel
A = Angled Modesty Back Panel
TT = Two (2) T legs
-PV = Rectangular PVC Top

FUTM5424JANT-PV

FUT = Fundamentals Table
M = Mobile
5424 = 54Wx24D
J = 15" Modesty Back Panel
A = Angled Modesty Back Panel
NT = No Leg Left, T leg Right, Dtop Right
-PV = Rectangular PVC Top

FUTM5424JPATN-PV

FUT = Fundamentals Table
M = Mobile
5424 = 54Wx24D
J = 15" Modesty Back Panel
P = Perforated Modesty Back Panel
A = Angled Modesty Back Panel
TN = T leg Left, Dtop Left, No Leg Right
-PV = Rectangular PVC Top

* may specify t-mold edge or PVC

TCPMS2-PVA

TCP = Technology Command Podium
M = Mobile
S2 = Full Open Cupboard (includes 2 shelves)
-PV = T-Mold Edge
A = Optional Adjustable Height Lecturn Top

TCPMSBF-PVA

TCP = Technology Command Podium
M = Mobile
S = Half Open Cupboard (includes 1 shelf)
BF = Box File Pedestal
-PV = T-Mold Edge
A = Optional Adjustable Height Lecturn Top

TCPMCSBF-PVA

TCP = Technology Command Podium
M = Mobile
C = Cabinet with Locking Door
S = Shelf (interior of cabinet)
BF = Box File Pedestal
-PV = T-Mold Edge
A = Optional Adjustable Height Lecturn Top

TCPMS2-PV

TCP = Technology Command Podium
M = Mobile
S2 = Full Open Cupboard (includes 2 shelves)
-PV = PVC Top
* omission of A indicates a flat steel top

TCPMSBF-PV

TCP = Technology Command Podium
M = Mobile
S = Half Open Cupboard (includes 1 shelf)
BF = Box File Pedestal
-PV = PVC Top
* omission of A indicates a flat steel top

TCPMCSBF-PV

TCP = Technology Command Podium
M = Mobile
C = Cabinet with Locking Door
S = Shelf (interior of cabinet)
BF = Box File Pedestal
-PV = PVC Top
* omission of A indicates a flat steel top

* may specify t-mold edge or PVC